

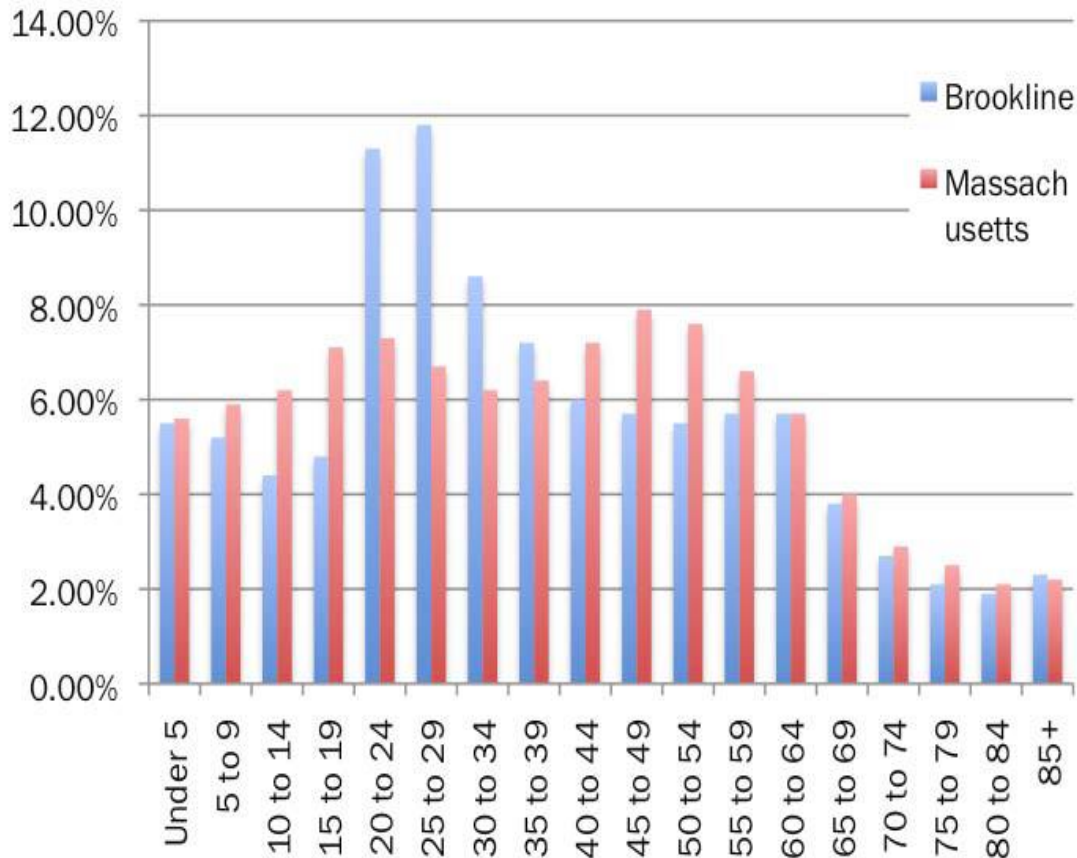
Demographic Forces Affecting Senior Housing

Frank Caro

Credits

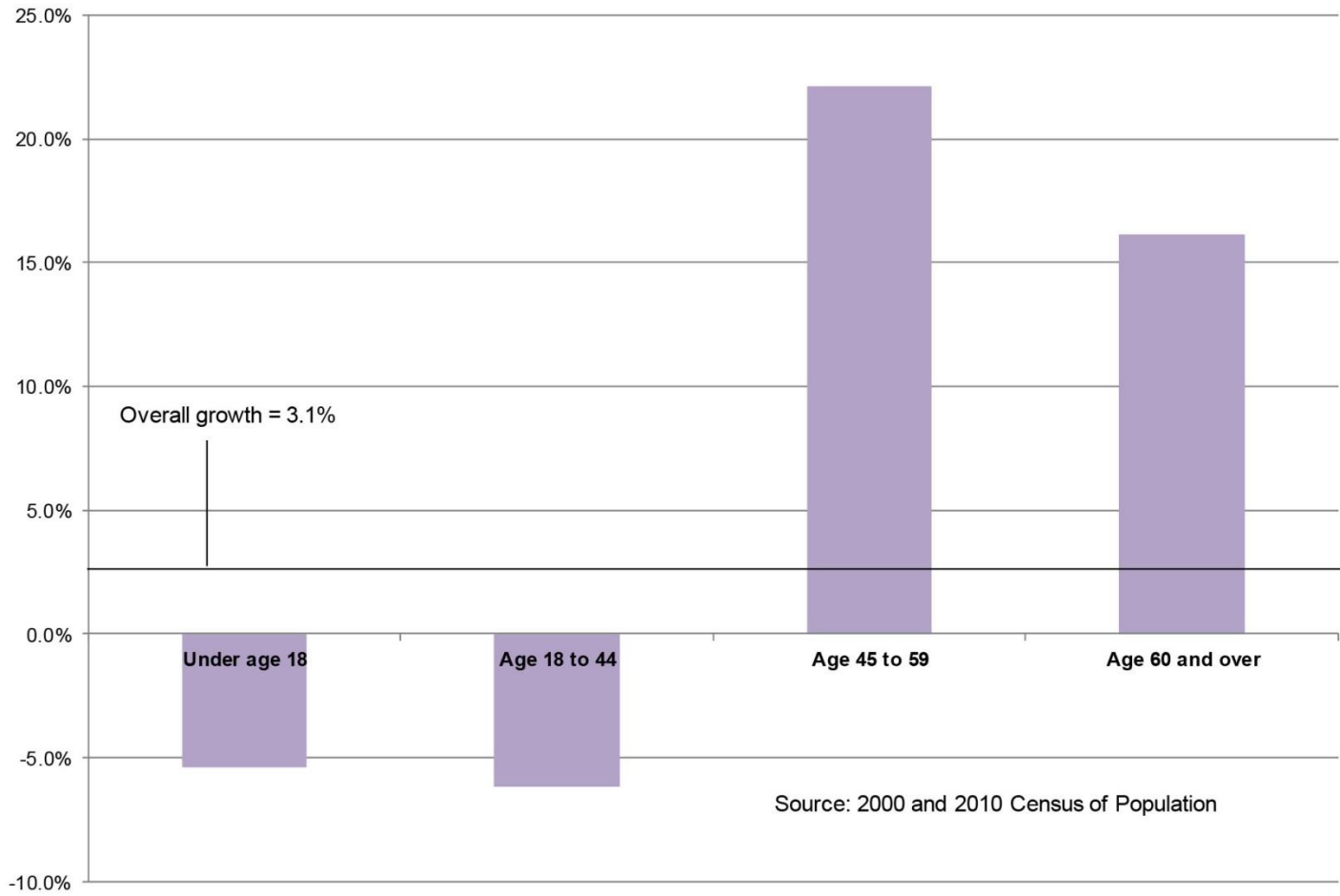
- Brookline Community Foundation
 - Understanding Brookline
 - Linda Pehlke
- Umass Boston Gerontology Institute
 - Jan Mutchler

2010 Age Distribution Brookline and Massachusetts



Source: DP-1: Profile of General Population and 2010 Demographic Profile Data

Percent Change in Population by Age Group, Massachusetts, 2000-2010



Percent Change in Brookline Population 2000-2010 by Age

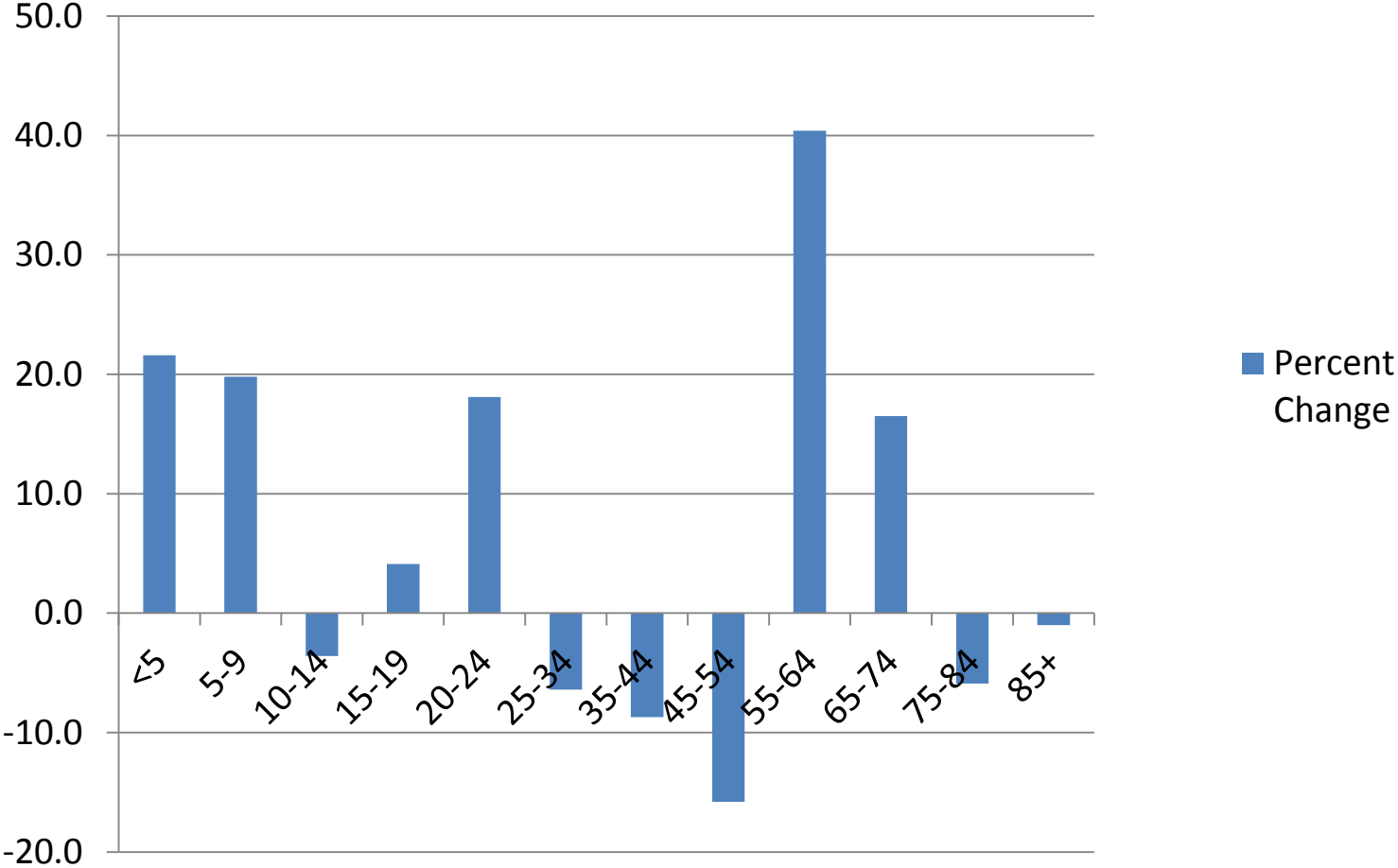
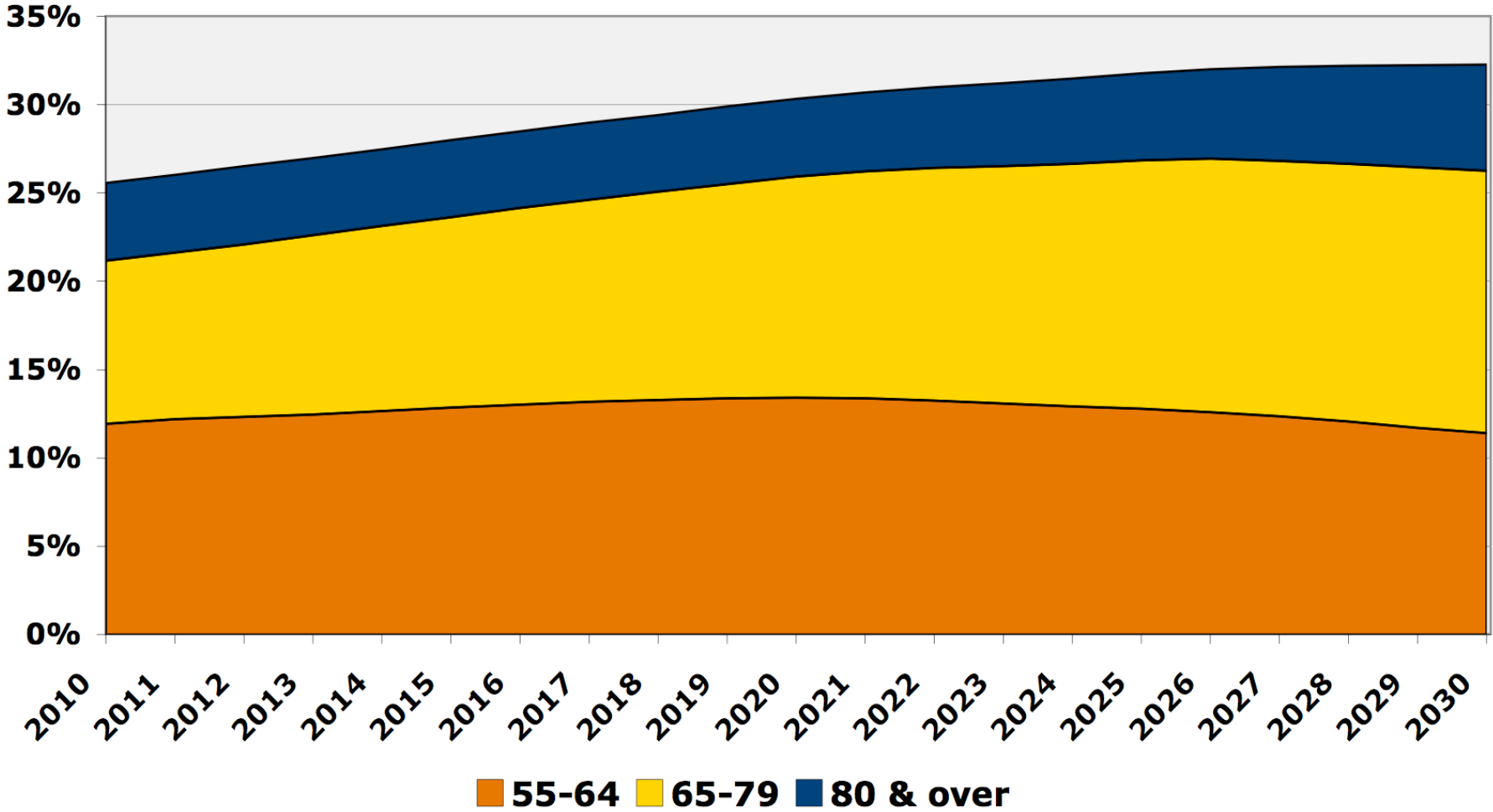


Fig. 2: The coming expansion of the older population in Massachusetts (projections 2010-2030)



Source: U.S. Census Bureau, Population Division, Interim State Population Projections, 2005

Town of Brookline

Elderly Population in 2010 by Census Blocks

1 Dot = 10 persons

Age Groups

- 55 - 64 Years
- 65 - 74 Years
- 75 - 84 Years
- Over 85 Years

Affordable Housing (Target Population : Elderly)

Units

- 1 - 24
- 25 - 60
- 61 - 107
- 108 - 153

Locus Map



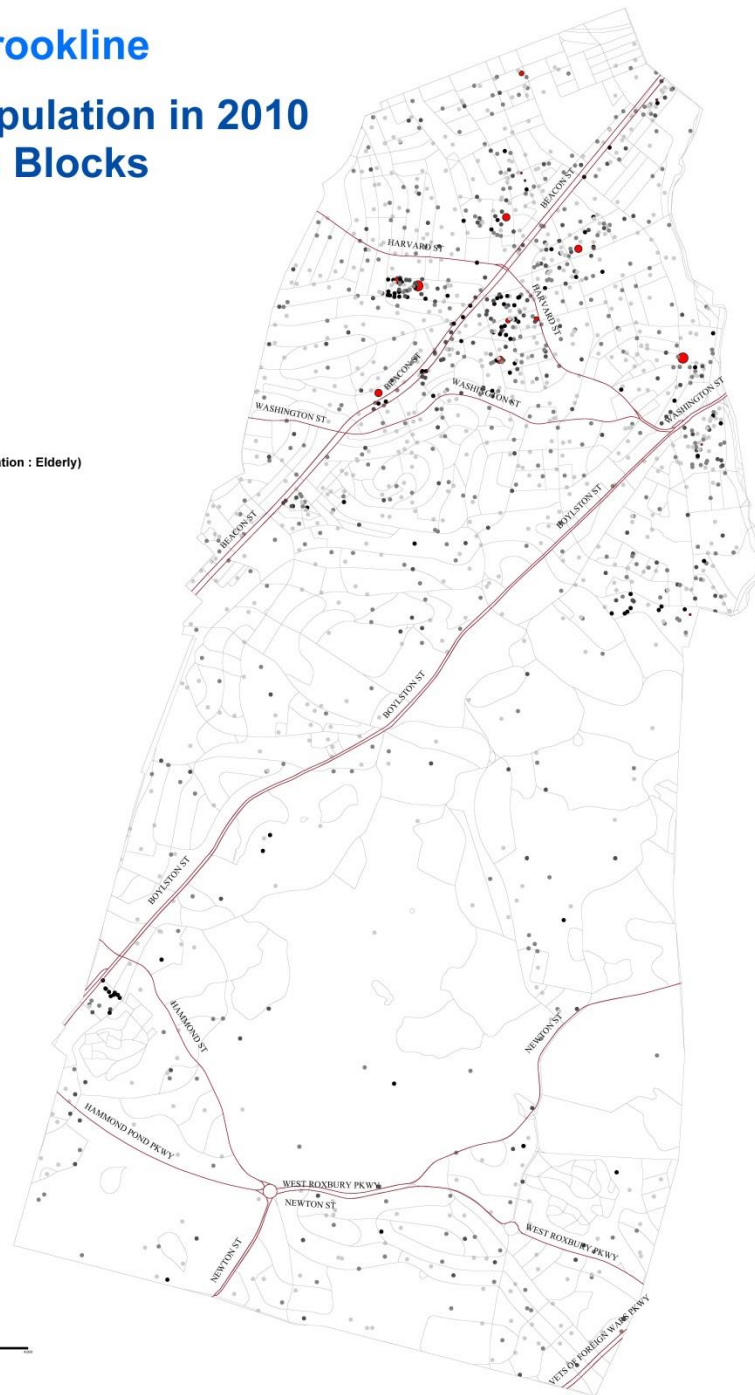
Disclaimer

The Town of Brookline makes no claims, no representations, and no warranties, express or implied, concerning the validity (express or implied), the reliability or the accuracy of the GIS data and GIS data products furnished by the Town, including the implied validity of any uses of such data.

Data Source

US Census 2010

Created by Brookline GIS
04/04/2013



Risk of Disability Increases with Age

- Nationally, reports of self-care difficulties by age
- 18-64 2%
- 65+ 9%
- Among those over 65, 24% have difficulty walking
- Disability stimulates demand for
 - Less challenging housing environment
 - More protective housing environment

Living Independently Becomes More Difficult with Age

- Nationally, independent living difficulty among those who are NOT institutionalized
- Age 65-74 8%
- 75+ 26%

Most Older People Live Independently

- In MA, 82% of the 65 plus population are householders or spouses of householders
- Only 6% live in group quarters, mostly nursing homes
- In Brookline, 60% of those 75+ live alone
- 75% of the seniors who live alone are women

Homeownership Rates Decline with Age in Brookline

- **Age** **Homeownership rates**
- **55-59** **75%**
- **85+** **31%**

Senior Renters Often Cost Burdened

- In Brookline households headed by senior renters, 62% of householders pay more than 30% of their income in rent.
- 31% of senior owners are housing-cost burdened